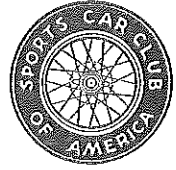
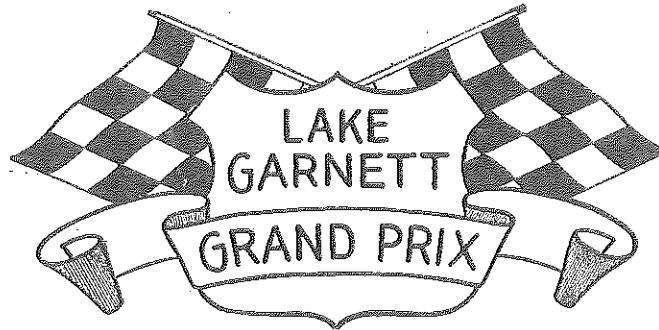


P R O G R A M

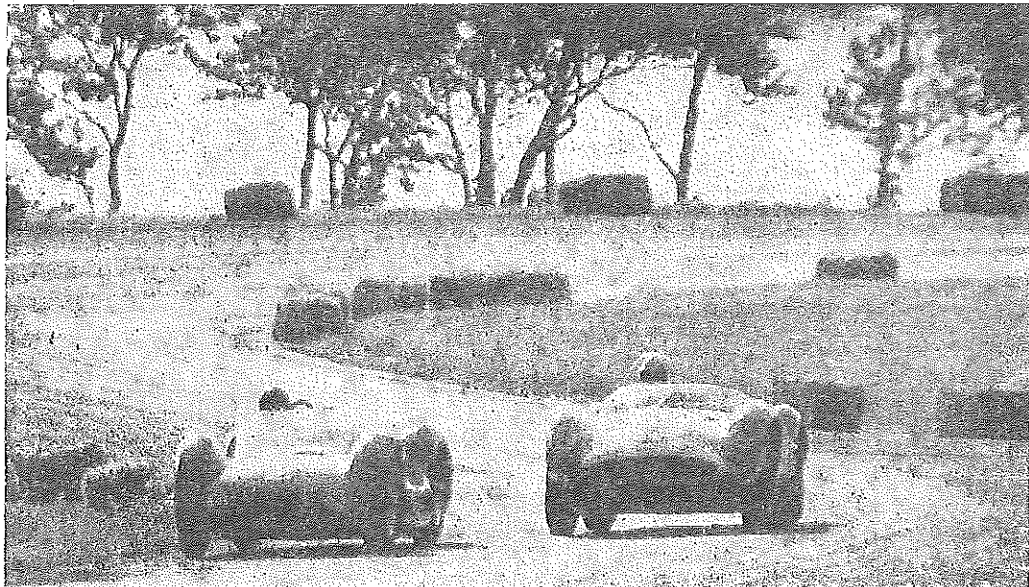
Fourth Annual



National S.C.C.A. Road Races

JULY 7 and 8, 1962

Garnett, Kansas



Presented by

KANSAS CITY REGION
SPORTS CAR CLUB OF AMERICA, Inc.

Sponsored by

LAKE GARNETT RACING ASSOCIATION
GARNETT, KANSAS

WILLIAM A. ONG
Race Chairman

ROBERT D. SCROM, Jr.
Regional Director

DON J. STITH
President

50c

You Can Build Security For Your Family With Protection by

Check Your Needs:

- Money to help pay hospital and surgery expenses.
- A guaranteed, tax-free income when you are disabled.
- Money to pay off the mortgage when you are disabled or after death.
- An income for your family if you die.
- Funds to assure education for your children.
- Guaranteed income when you retire.

In Garnett, Call
T. R. "TED" CALLOW
P. O. Box 61, Garnett

BMA Chanute Branch Office
129 W. Main, Chanute, Kansas



TED CALLOW

BUSINESS MEN'S ASSURANCE
Company of America

Home Office, Kansas City 41, Mo.

Life Insurance - Health Insurance - Hospitalization - Major Medical Expense - Group Plans - Annuities



OFFICIAL PERSONNEL

**Fourth Annual
Lake Garnett Grand Prix Sports Car Races
July 7 and 8, 1962**

A National Sports Car Club Of America Racing Event

Robert D. Scrom, Jr., Regional Executive of the Kansas City Region of the Sports Car Club of America, Inc.

RACE OFFICIALS, SCCA

RACE CHAIRMAN	Wm. A. Ong	CHIEF SCORERS	Helene Melgaard, Mary Stipe
ASSISTANT RACE CHAIRMAN	Bill Lutz	CHIEF TIMER	Frank Schmitz
CHIEF STEWARD	Hal Stipe	CHIEF PIT STEWARD	Jerry Moore
ASSISTANT CHIEF STEWARD	A. W. "Bud" Berg	CHIEF ANNOUNCER	Bob Musberger
CHIEF STARTER	Dale Duncan	REGISTRARS	Eva Templar, Kitty Lutz, Mary Berg, Louise Knight
ASSISTANT STARTER	Bob Scrom	COURSE PHYSICIAN	Dr. Laurence Evans, M.D.
RACE SECRETARY	Mary Stipe	FIRST AID	Fran Baker, R.N.
PRESS	Grace M. Harris	REGIONAL CONTEST BOARD	
SAFETY TECHNICAL INSPECTION	Gene Nicholson	REPRESENTATIVE	Richard Anderson
CHIEF OBSERVER	Pearson Thompson	PROGRAM CHAIRMAN	Ted Brown
COURSE MARSHAL	Ross Melgaard	STEWARDS OF THE MEETING ..	George Tipsword, Chm. Alan W. Berg Dean Knight
COMMUNICATIONS CHIEF	Marvin Bredemeire		
GRID MARSHAL	Arthur Bunker, Jr.		
FLAG MARSHAL	Bob Scrom with the Iowa Flag Crew		

OFFICERS, GARNETT RACING ASSOCIATION

Don J. Stith, President	Frank H. Bennett, Secretary and Publicity
R. W. Farris, Vice-President	Arthur M. Hughes, Treasurer
Members of the Executive Committee: Leonard McCalla, Jr., and Kenneth Crippin.	

COMMITTEES

Concessions, C. S. Busby	Crowd Control, Loren Warner and Meryl Coker
Grounds, Claude Anderson and Donald McAfee	Liaison Officer for SCCA and Garnett, Kenneth Crippin
Parking, Gwinn Shell and W. R. Stockebrand	Photographers, Eugene Durst, Charlotte Matthews
Posters, Jimmy Cooper	Signs and Art, Owen T. McMillan
Program Book, Frank H. Bennett	Construction, Robert Kite
Reservations, Richard H. Sweers, and Mrs. Robert Powers	Track, Kenneth Crippin and Robert Kite
Tickets, Arthur M. Hughes	

ORGANIZATIONS REPRESENTED

American Legion	Gun Club	Radio
Anderson County Bar Ass'n	Knights of Columbus	Rotary Club
Boat Club	Lions Club	Saddle Club
Chamber of Commerce	Medical Association	Veterans of Foreign Wars
Golf Club	Press	Vista Study Club

RACE ENTRIES

(Continued)

CAR NO.	NAME	ADDRESS	MAKE OF CAR	REGION
H/PRODUCTION (Cont.)				
62	Ken Drysdale	Overland, Mo.	A/H Sprite	St. L.
63	Frank Brunot	Boulder, Colo.	A/H Sprite	Colo.
64	Bob Black	Rayville, Mo.	A/H Sprite	KC
70	Ken Glasener	Chicago, Ill.	A/H Sprite Mg I	Chi.
85	M. W. Davis (Bud)	University City, Mo.	A/H Sprite	St. L.
85	*Ray L. Michaels			St. L.
91	Bob Stratton	Tulsa, Oklahoma	A/H Sprite	Neokla
97	Dr. Charles Rogers	Wagoner, Okla.	A/H Sprite	Neokla
A/SPORTS RACING				
8	William F. Riggs	Kansas City, Mo.	McKee/Chevy	KC
B/SPORTS RACING				
53	James R. Harris	Liberty, Missouri	Lotus 47/Ford	KC
C/SPORTS RACING				
3	Bill Custer	Muscoutah, Ill.	Climax	SIR
21	Ken Edwards	Overland Park, Kan.	Elva/Alfa	KC
26	J. S. Baxter	Aspen, Colo.	Merlyn	West RM
28	David Foerster	Okla. City, Okla.	Elva/Alfa	Okla
87	J. Dee Snyder	Granite City, Ill.	Shiva	SIR
D/SPORTS RACING				
4	John Walker	Okla. City, Okla.	SAAB	Okla.
7	J. Forrest Tindall	Springfield, Mo.	Lola/SAAB	KC
8	Dick Durant	Mission, Ks.	Dubury/SAAB	St. L.
12	Frank Dickerson	Wichita, Kansas	Jabro/SAAB	Wich.
14	Skip Remple	Wichita, Kansas	Jabro/SAAB	Wich.
19	Roger W. Noonan	Olathe, Kansas	SAABeria	KC
36	Dean Elder	Marshalltown, Iowa	TerrySAAB	DES MV
61	Christine Roberson	Topeka, Kansas	Jabro/SAAB	Kansas
96	Dr. Robert Katsev	St. Louis, Mo.	Bobscat	St. L.
FORMULA FORD				
1	Bobby Nichols	Tulsa, Oklahoma	Merlyn	Neokla
4	Blake Harder	Fayetteville, Ark.	Lotus	Ark
6	Stephen Louden	Dallas, Texas	Merlyn	Texas
7	Robin Spurrier	Wichita, Kansas	Merlyn	Wichita
8	James King	Belleville, Ill.	Climax/Royale	SIR
39	Bill Custer	Muscoutah, Ill.	Climax	SIR
53	Eldon (Bud) Howard	Kansas City, Mo.	Lotus 51	KC
61	John Saucier	Midwest City, Okla.	Titan	Okla
69	Roy Woods	Encino, Cal.	Climax/Royl	Cal Club
79	Mark Waco	Tarzana, Cal.	Merlyn	Cal. Club
FORMULA/A				
15	Brian Haupt	Shawnee Mission, Ks.	Cooper/Climax	Kansas
FORMULA B				
12	Tom McEntire	Leawood, Kansas	Co-op Special	Kansas City
16	Harvey D. Woodward	Shawnee Mission, Ks.	Lotus 51	KC
34	Jim Kauffman	Dallas, Texas	Merlyn	Texas
42	William C. Johnson, Jr.	Kansas City, Mo.	Co-op Special	KC
75	Evan L. Noyes	Indianapolis, Ind.	Brahham BT 18	Indy
88	Gene Forsthofel	Overland Park, Kansas	Lotus/Ford	KC
99	Harvey Simon	Mineral Wells, Texas	Caldwell	Texas

RACE ENTRIES

(Continued)

CAR NO.	NAME	ADDRESS	MAKE OF CAR	REGION
FORMULA C				
33	Bob Smith	Dallas, Texas	Merlyn	Texas
37	Benney D. McCoin	Calumet City, Ill.	Crossle	Indiana NW
78	Fred Roehr	Portland, Oregon	Titan Ford	Oregon
FORMULA VEE				
3	Carl VonDoymi	Shawnee Mission, Ks.	Zink	KC
11	Harvey Staab	Denver, Colorado	Zink	Colo
14	Joseph Wedig	Alton, Illinois	Autodynm	SIR
17	Royce Wallace	Wichita, Kansas	Vanguard	Wichita
24	Van Durrett	Bartlesville, Okla.	VD	Neokla
25	Mation O. Noah	Shawnee Mission, Ks.	Gladiator	KC
31	Richard Schmer	Fort Collins, Colo.	BKW	Colo
39	Jimmy O'Dell	Prairie Village, Ks.	Bobsy	Kansas City
41	David Schuster	O'Fallon, Illinois	Zink	SIR
42	John A. Beck	Mason City, Iowa	McNamara Hawke	Mark 1
43	Terry Keeper	Mason City, Iowa	McNamara Hawke	Mark 1
44	Kendall L. Noah	Prairie Village, Ks.	Zark	Kansas City
48	Vernon D. Claiborne	Leawood, Ks.	Shark	Kansas City
57	Heinz Arent	Manhattan, Kansas	Formcar	Kansas
79	Myron Lee	Carbondale, Ill.		SIR
83	Harvey Templeton	Winchester, Tenn.	Ringwraith	Chatt. Region
86	J. Robert Young	Vail, Colo.	Zink	Colo.
87	Jerald Adams	Prairie Village, Ks.	Shark	Kansas City
88	Gene Forsthofel	Overland Park, Ks.	Shark	Kansas City
99	David J. Lichius	St. Louis, Missouri	Zink	St. Louis
SEDAN/A				
4	Vern Bixby	Kansas City, Ks.	Mustang	Kansas City
33	John G. McComb	Hutchinson, Ks.	Mustang	Wichita
56	J. Chris Dyer	Aspen, Colorado	Camaro Z-28	Wstn. Reky Mt.
68	Roy Woods	Encino, Cal.	Camaro Z-28	Cal Club
78	Mark Waco	Tarzana, Cal.	Cougar	Cal Club
SEDAN/B				
17	Mark D. Cain	Okla. City, Okla.	Lotus Cortina	Okla
20	Ray Blitstien	Creve Coeur, Mo.	Lotus Cortina	St. Louis
45	Fred Tenerich	Denver, Colorado	Porsche	Colo.
SEDAN/C				
10	Robert Henson	Los Alamos, New Mex.	Alfa/Jr	Rio Grande
20	Ted Strait	Cedar Rapids, Iowa	Mini Cooper	Iowa
31	Robert Hindson	Kansas City, Missouri	Austin Cooper S	KC
33	Roger Mitchell	St. Louis, Missouri	Austin Cooper S	St. L.
47	Emmett R. Pyatt	St. Louis, Missouri	Austin Cooper S	St. L.
77	John Peach	Topeka, Kansas	Austin Cooper S	Kansas
93	Britton Brown	St. Louis, Missouri	Austin Cooper S	KC
95	William Jo Bell	Cedar Rapids, Iowa	Austin Cooper S	Iowa
SEDAN/D				
11	Glen Shepard	Overland Park, Kansas	NSU	KC
16	R. J. Boehm	St. Louis, Missouri	Austin Cooper S	St. L.
40	Elouise Norris	Oklahoma City, Okla.	Austin Cooper	Okla
86	Claude Whitehead	Tulsa, Oklahoma	Mini Cooper	Neokla
	* Co-Driver			

RACE ENTRIES

(This list is subject to change in accordance with additions or cancellations of entries received by the Secretary of the Kansas City Region, SCCA)

CAR NO.	NAME	ADDRESS	MAKE OF CAR	REGION
A/PRODUCTION				
51	Major Loren Pearson	Topeka, Kansas	Simca/Abarth	Kansas
81	Sun Oil/David Dooley	Okla. City, Okla.	Corvette	Okla.
91	Sun Oil/Don Yenke	Canonsburg, Pa.	Corvette	Neokla
98	D. Geishart		Cobra	
B/PRODUCTION				
2	W. Marvin Shoenfeld	Creve Coeur, Mo.	Corvette	St. Louis
7	Mack Yates	St. Louis, Mo.	Mustang	St. Louis
46	Jerry Henderson	Lawton, Okla.	Corvette	Okla.
47	Dick Durant	Hazelwood, Mo.	Corvette	St. Louis
51	Major Loren Pearson	Topeka, Kansas	Cobra	
77	Wm. Stuart Conklin	Kirkwood, Mo.	Mustang	St. Louis
C/PRODUCTION				
44	Robert Hindson	Kansas City, Mo.	Bunker Porsche	Kansas City
86	Stanford Trumbower	Des Moines, Iowa	TR-6	Des Moines
D/PRODUCTION				
9	Eldon (Bud) Howard	Kansas City, Mo.	Triumph 4	Kansas City
14	Ron Oliver	Raytown, Mo.	Triumph 4	Kansas City
23	Donna Mae Mimms	Bethel Park, Pa.	Yenko Stinger	Ne Ohio
25	Dan Parkinson	Glendale, Calif.	Datsun 2000	Cal Club
34	William McKemie	Austin, Texas	Elva Courier	Lone Star
37	Gene Strautman	Overland Park, Kan.	TR/4	Kansas City
37	*Stan Laughlin	Grandview, Mo.	TR/4	Kansas City
45	Dr. D. W. Foerster	Okla City, Okla.	Datsun 2000	Okla.
64	Don Stacker	Independence, Mo.	TR/4	Kansas City
69	Mel Bogus	Creve Coeur, Mo.	Datsun 2000	St. Louis
74	Donald Preston	Wichita, Kansas	Lotus	Wichita
75	Dr. Don Ginardi	Kansas City, Mo.	Lotus S/7	Kansas City
99	Dave Coman	Tulsa, Oklahoma	Alfa 1750 Spyder	Neokla
E/PRODUCTION				
2	Carlos Garza	Irving, Tex.		Texas
2	*Jug Latham	Plano, Texas		Texas
4	Tommy Allen	Okla. City, Okla.	Porsche Speedster	Okla.
6	Vern Bixby	Kansas City, Kan.	MGB	Kansas City
7	Larry Myers	Boulder, Colo.	Porsche	Colo.
40	David Dooley	Okla. City, Okla.	Tr 6 GT Plus	Okla.
71	Arnold Fredericks	Wichita, Kansas	MGB	Wichita
72	William Boemler	Overland, Mo.	TR 3	St. Louis
F/PRODUCTION				
3	C. Leonard Voice	Denver, Colo.	Datsun 1600	Colo.
15	Milton Bentley	Dallas, Texas	Datsun	Texas
21	M. Allen Cadwell	Midwest City, Okla.	MGA	Okla.
22	M. Steven Hughes	Wichita, Kansas	Datsun	Wichita
24	Rameau Johnson	Fenton, Missouri	MG Midget	St. Louis
39	James Speck	Okla. City, Okla.	Austin Healey	Okla.
51	David Gillenwater	Kanas City, Mo.	Volvo	Kansas City
58	Geo. England	Midwest City, Okla.	Volvo P 1800	Okla.
65	Bert A. Jones	Tulsa, Okla.	A/H Sprite	Neokla
78	Bryan Cramond	Kansas City, Mo.	Sunbeam Alpine	Kansas City
80	William Juliff	Independence, Mo.	Lotus 7 A	Kansas City

RACE ENTRIES

(Continued)

CAR NO.	NAME	ADDRESS	MAKE OF CAR	REGION
89	Ray Pickering	Lawrence, Kansas	Lotus 7 A	Kansas
G/PRODUCTION				
5	Darrell Honn	Kansas City, Mo.	Sprite 1100	KC
23	Larry Atwell			St. L.
28	Michael G. Yore	Arlington Heights, Ill.	A/H Sprite	Chi.
38	W. B. Barney McCray	Kansas City, Mo.	A/H Sprite Mg. 2	KC
41	Ronald Sharp	Des Moines, Iowa	MG Midget	Des M
44	Robert Wheat	Golden, Colo.	Datsun	Colo.
65	Costa J. Dunias	Odessa, Texas	Triumph Spitfire	W. Tex.
69	Gordon Smiley/	Ballwin, Mo.	Triumph Spitfire	St. L.
76	Stan Engleman	Fort Worth, Texas	MG Midget	Texas
84	Paul Fortner	Okla. City, Okla.	Datsun	Okla.
88	Darrell Myers	Burnsville, Minn.	A/H Sprite	L.O.L.
H/PRODUCTION				
0	David G. Smith	Manhattan Beach, Calif.	A/H Sprite	CSCC
3	Bill Barton	Topeka, Kansas	A/H Sprite	Kansas
9	Dave Eagleson	Olney, Ill.	A/H Sprite	C.I.
13	Robert Icenberger	Vinita, Okla.	A/H Sprite	Neokla
17	Bruce Kline	Castiac, Cal.	Fiat 850	CSCC
25	Jerry Hall	Wichita, Kansas	Mg Midget	Wichita
37	Richard Gerry Wilson	Prairie Village, Kan.	A/H Sprite	KC
43	Charles Grauel	Kansas City, Kan.	A/H Sprite	Wichita
54	Dorman Lough	East St. Louis, Ill.	A/H Sprite	St. L.
55	Tom Fowler	Richardson, Texas	A/H Sprite	Texas
56	Hank Afghani	Kansas City, Mo.	A/H Sprite	KC

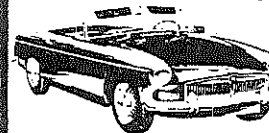
JAGUAR-MG-AUSTIN

Sports Car Hq. For Johnson Co., Kansas

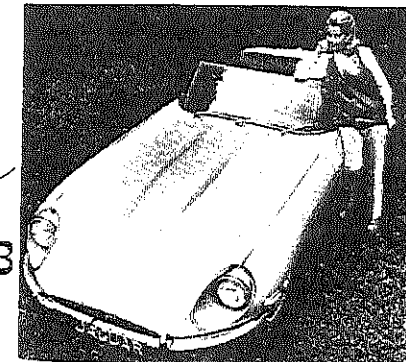
Come in and say

Sports Car

We'll know you mean
the



MGB



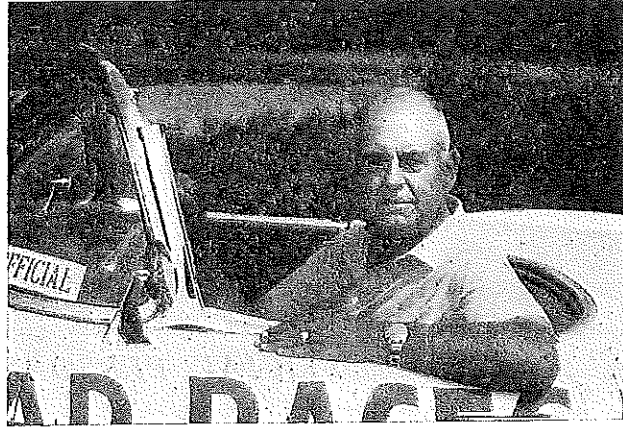
Joe Egle Motor Imports

215 E. Park

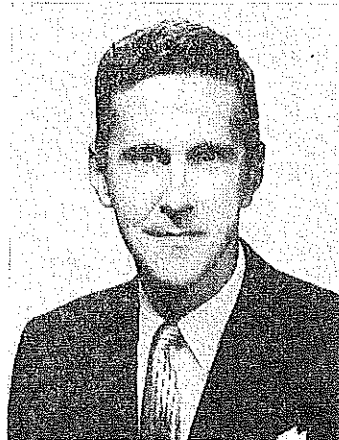
OLATHE

ST2-2211

DON J. STITH
President,
Lake Garnett
Racing Association
Garnett, Kansas



WILLIAM A. ONG
Race Chairman,
Kansas City Region,
Sports Car Club of
America, Inc.



ROBERT D. SCROM, JR.
Kansas City Regional
Executive, Sports Car Club
of America, Inc.

HAL STIPE
Chief Steward,
Kansas City Region,
Sports Car Club of
America, Inc.



DALE DUNCAN
Chief Starter,
Texas Region,
(Dallas)
Sports Car
Club of America, Inc.



Shaler Products

For Your Car Engine . . .

PEP . . . POWER . . . PERFORMANCE



Rislone
the Oil
Alloy

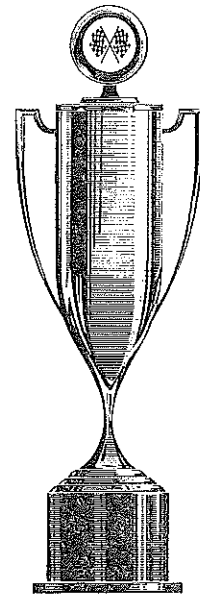
**HERE'S WHAT RISLONE GUARANTEES TO DO FOR
YOUR AUTOMOBILE ENGINE:**

- Frees sticking valves. Quiets noisy hydraulic valve lifters.
- Tunes up sluggish engines—makes them run quieter and smoother.
- Absorbs power-robbing gums and sludge—restores lost compression and power.
- Facilitates break-in of new or reconditioned engines—permits normal driving speeds immediately.
- Keeps oil free flowing even in sub-zero weather, for quicker starting and immediate, adequate lubrication.

The Rislone Rally is a sincere salute to America's fussiest drivers—the members of the Sports Car Club of America. It is intended to recognize their zealous interest and personal contributions to automotive progress in design, engineering and testing.

Award winners in rally competition will be the top ten rallyists designated by the Rally Board of the SCCA at the end of 1962.

A Grand Champion Racing Competitor and a Grand Champion Rallyist will also be chosen with the assistance of the Contest Board and Rally Board of the SCCA.



If You've Ever Been In A Rally You Can Join The New Rislone Rally Club

If you have competed in any local, regional or national rally, you are eligible for membership in this new Rislone Rally Club. You do not have to be an active member of the SCCA to join. Membership entitles you to the club's official

metal seal (for dashboard or door), membership card and an information book, "Engine Performance". Obtain application from Sports Car Magazine; or write: Rislone Rally Club, The Shaler Co., Dept. 0000, Waupum, Wis.

SPONSORED BY

HUGHES AUTO SUPPLY

GARNETT & OTTAWA, KANSAS

Distributor of SHALER PRODUCTS to Better Car Dealers, Service Stations, and Garages.

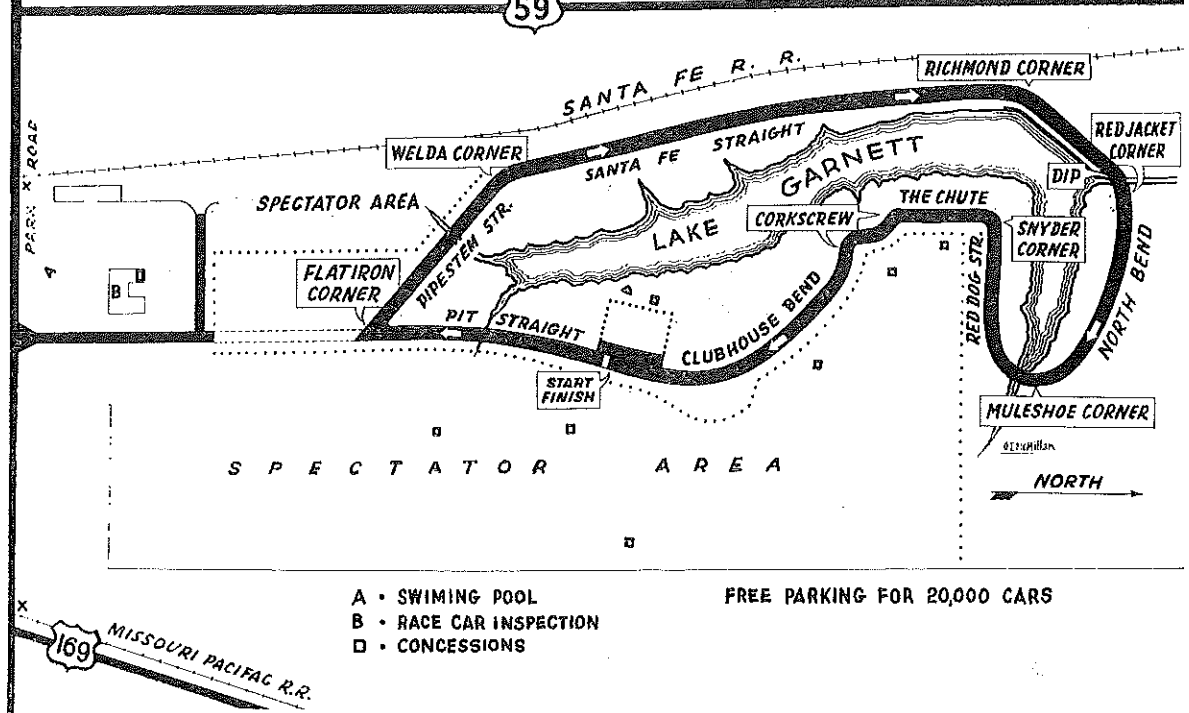


LAKE GARNETT RACEWAY

GARNETT, KANSAS



TO KANSAS CITY



All cars seen racing on the Lake Garnett Road

pictured above are powered by

Co-op Ethyl Gasoline

furnished by courtesy of

Consumers Cooperative Association

KANSAS CITY, MISSOURI

And

Greeley Cooperative Association

GREELEY, KANSAS

On U.S. 169 9 Miles Northeast Garnett

NEW

COOP

GASOLINES

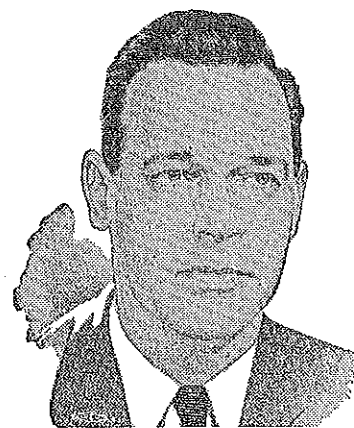
PLUS mp

CONGRATULATIONS

GARNETT, KANSAS

for Bringing to Kansas the first National S.C.C.A. Road Races
ever to be held in Our Mid-America Region.

JOHN ANDERSON
GOVERNOR OF KANSAS



Approximate Distances Of Points Shown On Map

Start and Finish — Flatiron Corner, .3 mile.
Pipestem and Santa Fe Straights, 1 mile.
Dam and Dip, .2 mile.
Dip — Muleshoe bridge, .3 mile.

Bridge — Snyder Corner, .2 mile.
Snyder Corner — Corkscrew, .3 mile.
Corkscrew — Start and Finish, .5 mile.

The Lake Garnett Race Course

Lake Garnett belongs to the group of race courses known as a "true road course." A "true road course" means that the races are run on a road built for and used by the public.

For 363 days of the year, the 2.8-mile road that circles Lake Garnett is used as an access road to the water by the general public. The speed is posted at 20 m.p.h. For the remaining two days of the year, the road is closed to the public and is

used as a course for sports car racing, with the speed limited only by horsepower, driver skill and an automobile's maneuverability.

Such courses as this are quite rare. Actually we do not know of another course quite like it in the United States; and there are only a very few true-road courses in the entire world.

FOURTH ANNUAL LAKE GARNETT RACES

A National S.C.C.A. Event

Each year, a limited number of National S.C.C.A. races are held in the United States. At these particular races, it is possible for race drivers, licensed by the Sports Car Club of America, to win points toward their championship standings for the year in their classes of race cars driven.

There are only thirteen national races listed in Sports Car, the official magazine of S.C.C.A. Lake Garnett is one of these 1962 Nationals and is the first ever to be held in our Mid-America region. Other National races, and the sponsoring regions are as follows: Mariboro, (Washington), Virginia International Raceways (Washington), Cumberland (Steel Cities), Stuttgart (Arkansas), Bridgehampton (New York), Road America (Chicago), Lime Rock (New England), Meadowdale (Milwaukee), Indianapolis Raceway Park (Indianapolis), Thompson (New England), Road America (Chicago), and Watkins Glen (Glenn, N.Y.).

COURTESY OF

THE MEDICAL CENTER CLINIC

MEDICAL ARTS BUILDING

GARNETT, KANSAS

WELCOME TO GARNETT, KANSAS

Sports Car Club of America and Visitors

THE GARNETT CHAMBER OF COMMERCE

Garnett, Kansas

County Seat of Anderson County

A Friendly, Progressive City that Welcomes New People and New Enterprises.

Founded in 1857 near the geographical center of the United States, Garnett, Kansas, is in the "cross-roads" region of the nation and is a part of the 13th largest trade area in the nation.

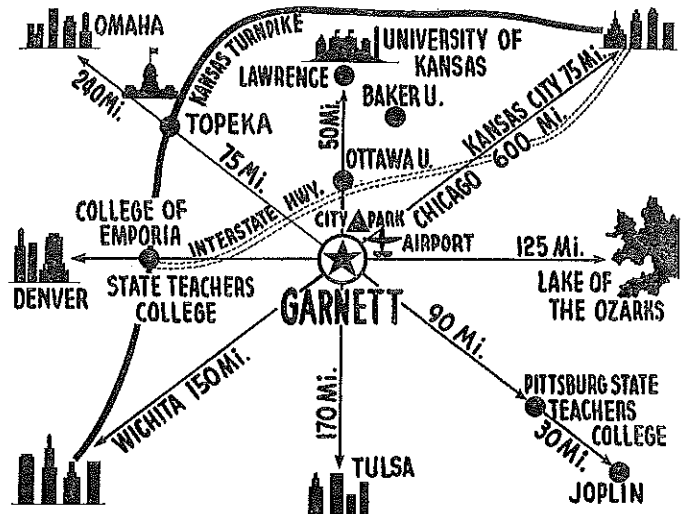
Built on high ground that never floods, the city is surrounded by a rich farming area and a wealth of minerals: gas, oil, limestone, and clay and shale suitable for brick and tile manufacture. Modern business establishments and high-type professional services make Garnett a good place to live and to make a living.

The Garnett Industrial Development Corporation, made up of the business and professional men, was organized to obtain industrial sites and buildings for new industries. Some twenty industries in the city manufacture and produce garments, metal goods, dairy products, ice and cold storage, crushed rock, agricultural limestone, baby chicks, egg products, poultry, machine shop products and concrete products.

Attractive sites, reasonably priced utilities, a plentiful water supply, a good labor potential with the absence of "labor trouble" and sound economic conditions combine to make Garnett the ideal community in which to establish industry.

Garnett is located at the junction of three excellent highways: U.S. 59 and 169, and K-31. The Kansas Turnpike 50 miles north, I-35 twenty miles north, and U.S. 54, 30 miles south, provide major East-West routes. The Santa Fe and Missouri Pacific Railroads intersect at Garnett. There is a government-approved airport one mile east of the business district.

Of the two city-owned parks, the larger one is a two-minute drive from the courthouse square. It covers 300 acres and contains not only a 65-acre lake, but also a golf course, riding arena, rifle and archery range, swimming pool, football stadium, two ball diamonds, fair ground, shelter houses, picnic facilities and the National Guard Armory. The Lake Garnett Grand



Prix Sports Car Races are run on the 2.8 mile blacktop road that circles this lake.

Garnett is a city of 3,000 people. A majority of the inhabitants are home-owners and they take pride in the appearance of the older homes as well as the new ranch-style homes that have sprung up in the surrounding suburbs. As your host city for the Grand Prix Sports Car Races, the people of Garnett are happy to welcome you, and it is our hope that you will enjoy your visit and return many, many times.

Welcome To Garnett!

July 7 & 8, 1962

Dear Friends:

In behalf of the citizens of Garnett, we take this means of extending a hearty welcome to each and every sports car fan who may come from far or near to attend the Lake Garnett National Sports Car Races.

We wish you a pleasant visit in our city. We want you to have a most enjoyable time at the races. And after the last race is run and you are homeward bound, we hope you will carry with you many happy memories of the time spent with us.

Drive safely, and do come back to see us. You are always welcome in Garnett.

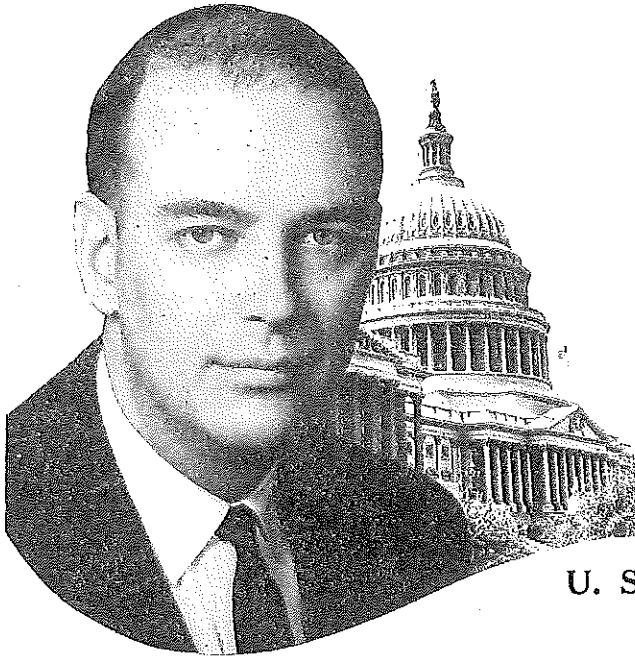


PAUL M. NESBITT, DVM,
President, Chamber of Commerce



GWINN G. SHELL, Mayor
Garnett, Kansas

GWINN G. SHELL,
PAUL M. NESBITT



Compliments of
U. S. Congressman Robert F. Ellsworth

The Don Stith Lake Garnett Trophy

In addition to the race awards, a special trophy is awarded each year, beginning with the Third Annual Lake Garnett Grand Prix Sports Car Races. The trophy, known as the Don Stith Lake Garnett Trophy, has been presented to the Lake Garnett Racing Association by Mr. Don Stith, president of the organization.

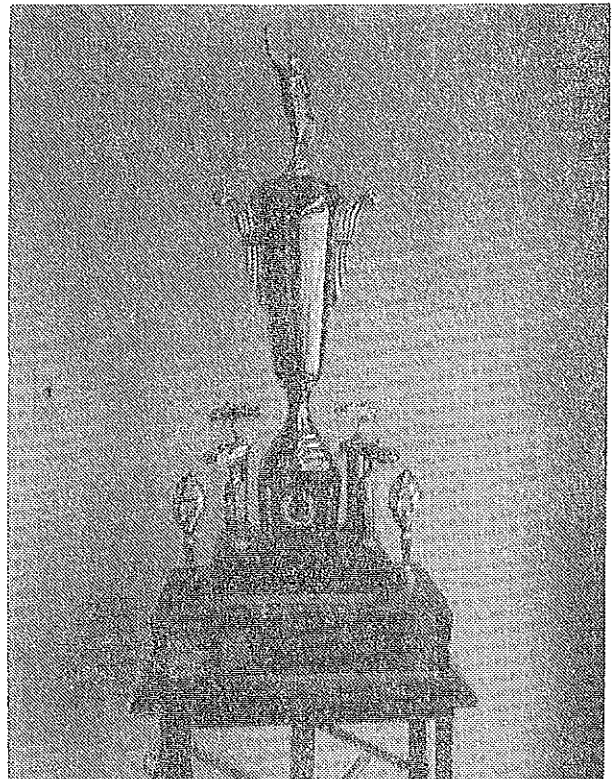
Forty-five inches tall, this handsome bronze trophy is to belong permanently to the Garnett Racing Association and will be presented to the "over-all" winner in the Grand Prix Race, who will have possession of it for the ensuing year. Two weeks before the following Lake Garnett Grand Prix, the trophy is to be returned to the racing association in order for it to be presented to the succeeding winner. This procedure will be followed for all future Lake Garnett Grand Prix races.

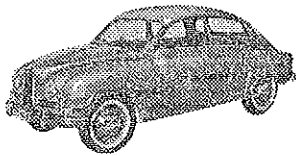
Each winner's name is to be engraved upon the name plate, along with the date of the race and the name of the winning car.

The 1961 winner was Harry Heuer of Chicago, driving a SCARAB race car.

Awards

Trophies will be awarded to First, Second, Third and Fourth places in each class if six or more cars enter. First, Second and Third if five cars enter. First and Second if four cars enter. First only if three cars enter. A minimum of three cars form a class.





puts
traction
at the point
of action

SAAB
FRONT WHEEL DRIVE

K. C. SAAB, Inc.

8207 WORNALL ROAD, KANSAS CITY, MO.

Phone DE 3-2746

"The Finest in Service and Parts"

WELCOME SCCA!



GARNETT, KANSAS

GREETINGS

SCCA and Racing Fans

Curlee Clothes — Freeman Shoes
Stevens Hats

Galloway Clothing Co.

"The Corner Clothier"

Garnett, Kansas

Rules For Spectators

Your co-operation in making racing at Lake Garnett both safe and enjoyable for everyone concerned will be greatly appreciated. Please help us by carefully reading and observing the following suggestions:

1. Never stand on the outside of any curve.
2. Never cross the race course during an event or during practice periods.
3. Stand behind the fences — they have been placed where they are for your safety.
4. Never stand in escape areas or roads—these are safety valves for out-of-control cars.
5. Never molest officials, flagmen or guards—these men are working for your enjoyment and safety.
6. Never run toward an accident.
7. Never permit a child or a dog to wander unattended near the course—keep your eyes on your children!
8. Never stop within 25 feet of the inside of any curve.
9. Never approach an overturned or disabled car with a lighted cigarette.
10. Never drop newspapers or any other objects on or near the course—papers can fall across a windshield, blinding the driver; stones and bottles can be snapped back like bullets.

Large wire trash containers have been provided throughout the Garnett City Park. Please help us keep the park clean by putting your empty cans, bottles, papers, etc., into these containers. Thank you very much. — Garnett Racing Association.

Howdy! - - - Come Eat With Us

HOTEL CAFE

North Side Square

BREAKFAST — LUNCH — DINNER

Good Food - - Air Conditioned . . You'll Like It!

"FINEST IMPORTS"

K. C. SUNBEAM-HILLMAN-HUMBER, INC.

SAAB,
Inc.

"Complete Rootes Line"

8207 Wornall Rd.
Kansas City, Mo.
Phone DE 3-2746

"Guaranteed . . . Service . . . Parts"

1962 Lake Garnett Race Queen



Queen of the Lake Garnett National (Fourth Annual) Sports Car Races is the lovely and talented Miss Linda Pryor of Kansas City, Mo.

Miss Pryor, who will present trophies to the winning race drivers of the Lake Garnett National Races, July 7 and 8, has been selected by the Junior Chamber of Commerce of Kansas City, Mo., to represent the Kansas City area in the Miss Missouri contest. She is being sponsored as Race Queen of 1962 by the Kansas City Region of the Sports Car Club of America.

This year's Race Queen is nineteen years old and has just finished her first year at the Kansas City, Mo., Junior College. She plans to attend there again next year. After that, her plans call for a degree from the Julliard School of Music. She is a talented singer and is a member of the Kansas City Civic Orchestra.

Her selection as queen of the Fourth Annual Lake Garnett Grand Prix is based on beauty, personality and talent. The 5 ft.-7 in. Brunette Beauty's world revolves around music. She plays the classic guitar, piano, 'cello and bass viol.

Welcome

SCCA

from

Charlie & Betty

ARFORD'S

Retail Liquors

Hi-way at Fourth Ave.

COPELAND & GAULT OIL COMPANY



Quality Products . . . Friendly Service
Tires and Batteries



M. E. COPELAND, Telephone 448-5922, Garnett, Kansas

C. E. GAULT, Telephone TE 5-3635, Richmond, Kansas

1962 SCCA Classification Of Sports Car

(Partial List)

CLASS A—
Jaguar XKE
Ferrari 250 GT
Corvette 327
Aston Martin DB4 GT

Class B—
Corvette 283
Ferrari 250 GT (2600 mm wheelbase)
Mercedes 300SL
Porsche Carrera
Aston Martin

CLASS C—
Daimler 250 SP
Morgan + 4 (with options)
AC Bristol
Porsche Super 90
Jaguar
Alfa Romeo Sprint Zagato
Lotus Elite

CLASS D—
A-H 3000
Alfa Romeo Veloce

Porsche 1500, 1600 Super
Turner-Climax
Lotus Seven Classic

CLASS E—
A-H 100-6-2.6
A-H 100-4-2.6
TR-2, 3, 4
MG A Twin-Cam
FIAT-Abarth 700, 750, doc
Elva Courier
Lotus Elite—Stage 1

CLASS F—
Sunbeam Alpine
Porsche 1500, 1600 Normal
Mercedes-Benz 190SL
FIAT-Abarth 850S
MG A
Renault Alpine 900, 850, 750

CLASS G—
Porsche 1300, 1300S
Alfa Romeo Giulietta
A-H Sprite

Lotus Seven America
FIAT-Abarth 850
Berkeley

CLASS H—
A-H Sprite
FIAT-Abarth 750 GT
FIAT 1200 Spyder
MG TC 1250, TD 1250, TF 1250
Lancia Appia GT
Morgan 4-4

1962 Modified Category

In 1962 the SCCA will recognize only six classes of Modified Category automobiles as follows:

Class C—over 3000 cc.
Class D—2000-3000 cc.
Class E—1600-2000 cc.
Class F—1100-1600 cc.
Class G—750-1100 cc.
Class H—under 750 cc.

The Ferrari

The 300 workers at the Ferrari factory at Maranello, Italy, turn out only six of these hand-tooled touring and sports cars a week. This limited production, plus the car's quality, means that supply never catches up with demand. Thus the Ferrari's price, begins at \$12,900.

The initial cost of a Ferrari, however, is only a small part of the cost of owning one. For example, a tuneup to put the engine in peak running form, costs from \$400 to \$2,000, depending on how finely tuned the owner wants his car. Incidentally, Ferrari engines vary in size — a few are made with 12 cylinders, others with eight or six.

In all, Ferraris have won 13 world racing titles since the end of World War II. There are only between 500 and 700 of them in the entire United States, and they are seldom seen, except at racing events such as the Lake Garnett Grand Prix. But once spotted, they are easy to identify. They are bright red, usually, low to the ground, and have a long snout and a humpback.

Many drivers speak of them with both affection and fear. Without question, the Ferrari is among the world's finest, most beautiful and fastest automobiles.

Road Testing Exposed!

Road Testers usually manage to remain critical and dispassionate judges of each automobile they evaluate. Occasionally, however, a road test article begins with the words: "Once in a while a car comes along that . . ." This phrase is the first sign of infatuation.

These very words open a recent test report on my current automobile, a Fitchew. "Once in a while," the article begins, "a car comes along that not only fulfills its promise of performance, but is also downright irresistible." Filled with joy in discovering that here is someone else who cares, I read on.

It is soon obvious that the road tester's love is even blinder than my own. Without pausing to examine the merchandise, he flings himself into the driver's seat and attacks the ignition, saying:

"Firing up is an instantaneous procedure: the engine rips immediately into action,"

True, starting is instantaneous. But "rips" is not quite the word to describe the sound of a Fitchew engine's awakening. There is only one word that adequately describes the sound and that is the name Fitchew. At first I thought the designer — obviously a man with a sense of humor — had picked this name to describe the fit of sneezing with which the engine greets its owner every morning. But a glance at Webster's revealed that a Fitchew is a European polecat.

"There is absolutely no wind noise."

Of course not. Even the winds on the edge of a hurricane would have a hard time getting themselves heard above a Fitchew engine. Passengers in a cruising Fitchew must resort to note-writing or lip-reading, because this is a car that will never be accused of being one in which you can hear a clock tick at 60 mph. Unless, of course, you reach 60 mph and turn off the engine.

"Hard cornering produces a certain amount of lean, but the discomfort to the driver is inconsequential; one is not even aware of it."

Until one rests one's arm on the top of the door and scrapes one's elbow on the pavement.

"The clutch has a firm bite."

It certainly does — also, on occasion, it chews.

"Although the ride is fully as comfortable as that of any other car in its class — if, indeed, there is any other car in its class — the short wheelbase does cause a slight pitching action over rough roads."

This action to which he is referring produces some rapid and rather suggestive movements from the driver, reminiscent of someone trying to do the limbo while sitting down. Actually if you relax, it can be rather fun.

"However, our test car was still a bit tight."

Tight! Mine is absolutely pickled. When things get to the staggering point (as they do at 70 mph in a heavy cross wind), that "item no car should be without — a windshield washer" turns itself on and attempts to sober the situation.

"The handle for the emergency brake is of the fly-off variety."

Enough said. Nothing could describe it more eloquently.

"The driver's seat affords plenty of hip room, and leg space is more than ample."

This seemingly-innocent statement is a dead giveaway to the road tester's physique. He must be exceeding short-legged and thin-hipped, and he probably wears size 5 shoes.

"The steering wheel is a bit close to the driver." So close, in fact, that it necessitates the adoption of a steering technique which resembles embracing a roulette wheel. Not only is this enamored test driver short-legged and thin-hipped, he must also have a chest like an upended breadboard.

Now that the road tester has gained an intimate knowledge of the car's interior and controls, he climbs out and examines the engine:

"Service accessibility is excellent. It is easy to reach the spark plugs, carburetor and distributor."

This is definitely one of the car's strong points, as the foregoing items all have to be removed every 2000 miles.

(Concluded On Page 19)

Welcome SCCA

*BE REFRESHED
AT THE RACES*



The Ottawa
Coca-Cola Bottling Co.
Ottawa, Kansas
Telephone CH 2-2112

Compliments of

Bill Allen Chevrolet

NORTH KANSAS CITY, MO.

Kansas City's Volume Dealer

Greetings, Visitors . . .

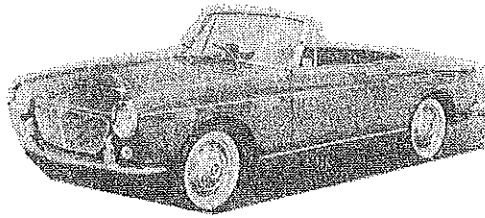
Best Wishes For An Enjoyable Week End In Garnett

Don J. Stith

President, Garnett Racing Association

GARNETT, KANSAS

FIAT



1200 spider.....

CONGRAT

To The Fo.
For Gaining

P R O G R A M

FRIDAY, JULY 6

11:00 A.M. to 7:30 P.M. —
Registration and Safety Inspection

SATURDAY, JULY 7

7:00 A.M. to 5:30 P.M. — Registration
7:00 A.M. to 3:00 P.M. — Safety Inspection
9:00 A.M. to 3:00 P.M. — Mandatory Practice *
3:30 P.M. — H Production Race, 18 Laps

* Grid positions will be based on best lap times recorded in practice.

This program is subject to change by the Race Officials depending on the class
entries received.

SPRITE

MIDGET

• • •

**SALES
SERVICE
PARTS**

• • •

K. C. JAGUAR-MG, INC.

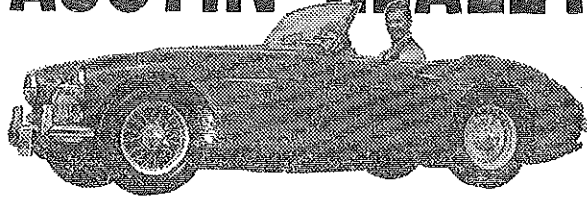
4203 TROOST AVE., KANSAS CITY, MO.

LO 1-7788

REGULATIONS

Of Garnett
International Rating!

AUSTIN HEALEY



...

SALES
SERVICE
PARTS

...

PROGRAM

SUNDAY, JULY 8

- 8:00 A.M. to 10:00 A.M. — Registration
- 10:00 A.M. — Formula Junior, Formula III Race, 18 Laps
- 10:45 A.M. — G Production Race, 18 Laps
- 11:40 A.M. — E Production Race, 18 Laps
- 12:15 P.M. to 1:00 P.M. — Lunch Break and Festivities
- 1:00 P.M. — D Production and H Modified Race, 18 Laps
- 1:45 P.M. — F Production Race, 18 Laps
- 2:30 P.M. — C Production Race, 18 Laps
- 3:20 P.M. — A, B, Production Race, 18 Laps
- 4:00 P.M. — Garnett Grand Prix —
B, C, D, E, F, and G Modified, 25 Laps
- 5:30 P.M. — Presentation of awards at Track

This program is subject to change by the Race Officials depending on the class entries received.

K. C. JAGUAR-MG, INC.

4203 TROOST AVE., KANSAS CITY, MO.

LO 1-7788

WELCOME TO GARNETT

We're Glad You Came

MAGGIO-SCHULTE, INC.
INSURANCE AND REAL ESTATE
BROKERS



GEO. B. MAGGIO, JR.
C. D. SCHULTE
W. N. MACK
EARL R. BROOKS
TWILA HERMRECK

WE SELL THE EARTH AND ALL ON IT.

Welcome SCCA!

**WESTERN AUTO
ASSOCIATE STORE**

Hank Allen

GARNETT, KANSAS

SPRADLIN PHARMACY

Wm. A. Neal, Pharmacist
Garnett's Rexall Store

RUSSELL STOVER'S CANDIES
FOUNTAIN SERVICE
SUN-TAN PREPARATIONS

Phone 446-5511

RACE ENTRIES

(Because it was necessary to print the following list four days before the closing date for entries, the list is subject to change in accordance with additions or cancellations of entries received by the Secretary of the Kansas City Region, S. C. C. A.)

Car No.	Driver	City	Make of Car
0	Herbert F. Steinbeck	St. Louis, Missouri	Austin Sprite
1	Don Yenke	Pittsburgh, Pennsylvania	Corvette
2	Harry Heuer	Chicago, Illinois	Chapparal
3	Jay Hoke	Skedee, Oklahoma	Elva Jr.
4	Tommy Allen	Oklahoma City, Oklahoma	Porsche
5	Robert D. Kelce	Belleville, Illinois	MGA Twin Cam
6	Enus Wilson, Jr.	Okmulgee, Oklahoma	Maserati
7	Robert Donner	Colorado Springs, Colorado	Porsche RS-61
8	Doug Thiem	Elm Grove, Wisconsin	Ferrari Berlinetta
9	Gary M. Wilson	Towanda, Kansas	Ferrari Testa Rosa
10	Dave Clark	New York City, New York	Lotus Super 7
11	Dick Thompson	Pittsburgh, Pennsylvania	Corvette
12	Kenneth D. Edwards	Kansas City, Kansas	Corvette
13	R. G. Harrison	Little Rock, Arkansas	OSCA
14	Pete Winberg	Des Moines, Iowa	Alfa Romeo Spyder
15	Edward Astri	Baltimore, Maryland	Fiat Abarth
16	Gene Nicholson	Kansas City, Missouri	Daimler
17	R. P. Vandawalker	North Little Rock, Arkansas	Corvette
18	L. Sheldon Brown	Evanston, Illinois	Alfa Super
19	Edw. J. Walsh, Jr.	St. Louis, Missouri	SAAB-Kurtis Spec.
20	Gordon Gresham	Wichita, Kansas	Cooper-OSCA
21	Grady Davis	Pittsburgh, Pennsylvania	Corvette
22	Donald E. Carter	Topeka, Kansas	Abarth Zagato
23	Ted W. Parrish	Joplin, Missouri	TR-3
24	Joseph R. Mayer	Lee's Summit, Missouri	Elva Mk II
25	Harvey Woodward	Shawnee Mission, Kansas	Elva Mk VI
27	Richard Bradford	Tulsa, Oklahoma	MGA
28	Anatoly Arutunoff	Bartlesville, Oklahoma	Lotus 7A

Welcome Visitors!

Fraker's Clothing Store

"The Store for the Lad and His Dad"

GARNETT, KANSAS

Compliments

Walter L. Simpson Agency



GENERAL
INSURANCE

Garnett, Kansas

Studebaker — Lark

York Air Conditioners

ANDERSON MOTOR CO.

GARNETT, KANSAS

RACE FANS, DRIVERS and VISITORS

Hope You'll Come Back!

Phones: 448-3714 Office

448-3972 Res.

448-5754 Res.

448-3169 Res.

305 Main — Garnett, Kansas



MAGGIO-SCHULTE, INC.
INSURANCE AND REAL ESTATE
BROKERS

WE SELL THE EARTH AND ALL ON IT

RACE ENTRIES

Car No.	Driver	City	Make of Car
29	Gordon Gresham	Wichita, Kansas	Austin Healey
30	Bruce Hoskins	Kansas City, Missouri	Austin Sprite
31	Walter Hotchkiss	Des Moines, Iowa	Sunbeam Alpine
32	John R. Carter	Omaha, Nebraska	Volpini Jr.
33	Bob Spooner	St. Louis, Missouri	Corvette
34	Dean E. Edmonds, Jr.	Lincoln, Massachusetts	Lotus Jr.
35	Fred C. Ellsworth	St. Paul, Minnesota	AC Bristol
36	Jay Dee Snyder	Granite City, Illinois	Lotus 11
37	Howard Hanna	Newton Square, Pennsylvania	DB Coupe
38	George Gunther	Omaha, Nebraska	Ferrari
39	Gene Cormandy	Fort Wayne, Indiana	Corvette
40	Roy Kunnick	Skokie, Illinois	Corvette
41	Dr. Rita Wetzel	Shawnee Mission, Kansas	Berkeley
42	Gene Smiley	Omaha, Nebraska	Austin Healey
43	Edwin French	Kansas City, Missouri	Lotus MkVI
44	R. E. L. Hayes	Vinita, Oklahoma	AC Bristol
45	Robert Tullius	Alexandria, Virginia	TR-4
46	James Sheffield	Topeka, Kansas	Handini
47	Bill Stone	St. Charles, Illinois	Lola Medallion
48	Jay Signore	Elizabeth, New Jersey	Elva Courier
49	Richard Anderson	Overland Park, Kansas	Lotus 7A
51	Walter S. Gray	Kansas City, Kansas	Allard
52	George E. Chapman	St. James, Manitoba, Canada	Lotus 7A
53	John Goans, Jr.	Kansas City, Missouri	TR-4
55	Frank Manley	Topeka, Kansas	DB LeMans
56	Donn Salyer-Richard Alley	Wichita, Kansas	Sprite
57	John Wessale	Cedar Rapids, Iowa	Glaur Mercury
58	Bert Persons	Wichita, Kansas	Elva Courier
59	Jim Adams	Sioux Falls, South Dakota	OSCA
60	Richard Brown	Golden, Colorado	Panhard Spec.
61	Jack Hinkle	Wichita, Kansas	Maserati

Welcome SCCA!

HOTEL RICHART

Telephone 448-3136

GARNETT, KANSAS

GARNETT

ICE & COLD STORAGE

"We Stored Two Miles of DOGS
for the Lake Garnett Races!"

CRUSHED AND BLOCK ICE

South End of Oak Street

Phone 448-3211

*Welcome Visitors
and SCCA!*

COKER'S STORE CO.

Garnett, Osawatomie, Paola, Kansas

Welcome Visitors!



It Pays To Stop At The APCO Sign

Hi-way 59 At 5th St.

WAYNE PENN, Mgr.

Welcome SCCA!

FRANKLIN DRUG CO.

"Garnett's Leading Drug Store"

425 South Oak

Welcome Visitors

BURGERTERIA

Sandwiches, French Fries, Cold Drinks
 Quick, Courteous Service
 Hi-way 59 — Phone 448-3521
 Plenty of FREE Parking

Welcome Visitors!

ART'S 66 SERVICE

Tires — Batteries — Accessories
 First and Maple — Highway 59
 Phone 448-3821 Philcheck Service

WELCOME!

Visitors and
 Sports Car Club of America

JOHN H. ASKINS
 Retail Liquor Store

Fashion Corner Fashion Corner

Suits—Coats—Dresses—Lingerie

Romaine's

"The Fashion Corner"
 Phone 448-3624 Garnett, Kansas

Sportswear—Hosiery—Accessories

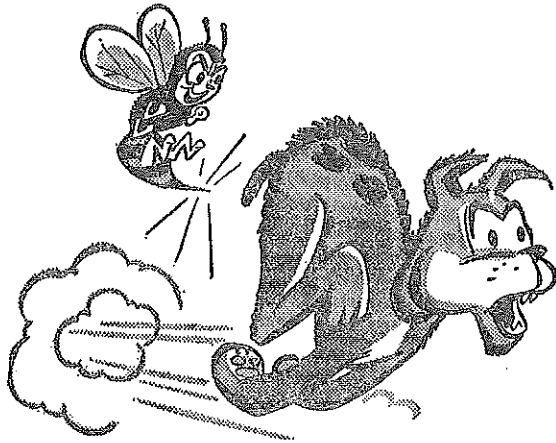
Fashion Corner Fashion Corner

RACE ENTRIES

Car No.	Driver	City	Make of Car
63	F. Robt. Woodward	Dubuque, Iowa	Cooper F III
64	Bruce A. Larson	Kansas City, Missouri	Fiat Zagato
65	A. Cecil Schoeneman	Sioux Falls, South Dakota	OSCA
66	Melvin Bogus	Florissant, Missouri	Sprite
67	Jack Gregg-Vernon Bixby	Topeka, Kansas	Lotus-OSCA
69	E. C. Hessert, Jr.	Haddonfield, New Jersey	Fiat Abarth
70	Frank Manley	Topeka, Kansas	DB HBRS
71	Meredith Thomas	Wichita, Kansas	Elva Mk 5
72	Eric Mangelsen	Ann Arbor, Michigan	Alfa Romeo
74	Ernie Harris	Ft. Wayne, Indiana	TR4
75	C. S. Trosper	Oklahoma City, Oklahoma	Porsche
76	Oliver C. Schmidt-Jim Scott	Winnetka, Illinois	OSCA DeTomaso
77	O. J. Klein, Jr.	Springfield, Illinois	Maserati
81	David Johnson	Grosse Ile, Michigan	Sprite
82	Peter Ledwith	Deerfield, Illinois	Lotus Super 7
83	George Bachelder	Clinton, Iowa	Mackson F III
84	T. J. Kelly	Augusta, Georgia	Morgan plus 4
85	Bert Persons	Wichita, Kansas	SAAB Alley Spec.
86	Donn Salyer-Richard Alley	Wichita, Kansas	Cherub
88	Jack Stone	St. Charles, Illinois	Elva Mk V
89	Ray Pickering	Lawrence, Kansas	Sunbeam Alpine
90	Thomas Slaymaker	Kansas City, Missouri	Daimler
91	Emmett Pyatt	St. Louis, Missouri	Jabro
93	Glenn Baldwin	Birmingham, Michigan	Lotus 17
95	Nolan K. Sims	Champaign, Illinois	Cooper-Porsche
97	Pete Sherman	Waco, Texas	Lotus XI
98	Martin Tanner	Saginaw, Michigan	Martin T-5
99	Jack C. Reed	Wichita Falls, Texas	Austin Healey
101	Wm. Flippo	Alton, Illinois	Austin Healey
102	Robert K. Hubbard	Cody, Wyoming	Porsche
111	John R. Peach	Topeka, Kansas	Morris-Cooper
114	George McClure	Allison Park, Pennsylvania	Austin Sprite
117	Mason Steinberg	Omaha, Nebraska	Sprite
118	Ed Alsbury	Mission, Kansas	Jabro
120	Richard Warren	Minneapolis, Minnesota	TR-3A
121	R. A. Aylward	Wichita, Kansas	Maserati
122	Marvin R. Dee	Chicago, Illinois	Abarth
125	Bruce Carrico	Overland Park, Kansas	SAAB
132	Jerry J. Salyer	Oklahoma City, Oklahoma	Porsche RSK
133	John Walker	Oklahoma City, Oklahoma	Fiat Abarth
138	Walter B. McCray	Kansas City	MG TD
155	Harold Clapsaddle	Tulsa, Oklahoma	Sprite
159	Robert Fry - Dusty Fry	Wichita, Kansas	Sprite
161	Ed Hausserman	Wichita, Kansas	Porsche RS 61
171	Ralph Miller	Wichita, Kansas	Lola
174	J. Parker Garwick II	Columbus, Ohio	Sunbeam Alpine
177	John Rowley	Dodge City, Kansas	Rowley Special
184	Bob Shaw	Pleasant Valley, Iowa	Alfa Spyder
188	Samuel W. Forder	St. Louis, Missouri	Lotus 7
199	William H. Clare	Tulsa, Oklahoma	TR-3
631	David Kiser	Overland Park, Kansas	Lola
771	John Becom, Jr. (Bob Schroeder, driver)	Dallas, Texas	De Tomaso
777	Mack Yates	St. Louis, Missouri	Corvette
888	Wm. Riggs	Kansas City, Missouri	Lotus XI

MAKE A BEELINE TO US

For Your Wire & Sheet Metal Products



We Build 50 and 75-Lb. Trailer Ice Boxes, Display Stands, Racks, Holders, Baskets, Bird Cages, Clothespin Bags, Shelves, Etc.

Facilities that can help you solve your production problems. With our ingenious, automatic forming machinery we are in a position to offer you precision work, handling intricate and simple wire forming jobs in sizes up to 3/8" dia., likewise light gauge sheet metal work up to 12 gauge. Complete diemaking, welding, assembly, painting, etc., facilities geared to volume production assure you prompt service and most reasonable prices. Let us work with you on that next job. Product development and planning services also available.

Dalton-Brecheisen Manufacturing Co.

BUILDERS OF METAL PRODUCTS

Garnett, Kansas — Telephone 448-3138 or 448-3922

Richard Dalton

Keith Brecheisen



HODGSON IMPLE. CO.

Garnett, Kansas

Welcome Visitors!

WELCOME SCCA!

Your Self-Service Store

BAY SHOE STORE

S-W Corner Square
GARNETT

Tank Wagon Farm Tire Service
Armstrong Tires

GARNETT OIL CO.

Champlin Products

621 South Oak Phone 34

Lawrence Lickteig
Phone 448-3531

For Service
Chas. "Red" Schlick
Jim Lankard

FINE
FOOD

WELCOME TO

FINE
FOOD

Linda's Chicken Basket

HIWAY 59 & 4TH AVE.

OPEN BOTH DAYS

OUR FAST SERVICE SPECIALS

BREAKFAST
(Beginning 5:00 a. m.)

Smorgasbord Buffet Service
(Dine in your car if you wish)

Your choice: Juice, Fruit, Eggs, Meat
Served with Coffee and Rolls

ONLY \$1.00

NOON — EVENING
(Enjoy Our Drive-in Fast Service)

Broasted Chicken
Sandwiches
Cold Drinks

ALL BOXED TO GO IF YOU WISH

Welcome to Garnett

Visitors And Sports Car Club Members

FARRIS FUNERAL HOME

GARNETT, KANSAS

Sports Car Racing

Sports cars are classified according to engine piston displacement, which is measured in cubic centimeters (cc). For racing purposes, the cars are usually divided into two groups — those above 2,000 cc, and those less than 2,000 cc. — and races are run for each group. Within each group, several races are run simultaneously, each race within the group being run for the various engine size classification. Also, the cars are divided according to "production" and "modified," which are designated by the letters "P" or "M". A "production" car is a car that is a standard factory product and can be purchased through a dealer. A "modified" car is one that has been especially built or "souped-up" for racing purposes.

For benefit of scorers and spectators, each car is numbered and lettered. For example, a car marked 22CM means that this car has been assigned the number, 22, for identification purposes and that it is a Class C Modified car.

Flags Used In Sports Car Racing

The Chief Starter's Flags Are:

GREEN: Used for the starting flag. It signifies the course is clear.

YELLOW (Motionless): Warning to watch out for danger, but passing possible.

YELLOW (Waved): Warning to watch out for danger and be prepared to stop.

RED: The race has been stopped.

YELLOW with HORIZONTAL RED STRIPS: Oil on course, slippery.

BLACK with ORANGE BALL: Car has mechanical failure, come into pits.

BLUE with WHITE STRIPE: You are being overtaken, give way.

WHITE: Ambulance on course.

CHECKERED: You have finished the race.

Assisting the Chief Starter are the flagmen at each checkpoint along the race course. Their flags are: GREEN for all is clear; Yellow for caution. All checkpoints are connected by telephone.

Stockebrand Motor Co.

Telephone 448-3212 601 South Oak

GARNETT, KANSAS

DODGE — DODGE DART

Goodyear Tire Headquarters

STRAIN'S STUDIO

OFFICIAL PHOTOGRAPHERS

LAKE GARNETT RACES

J. P. STRAIN EUGENE DURST

CHARLOTTE MATHEWS

Championship Kart Races

SATURDAY, JULY 7 — 7:30 P. M.

FUN . . . SPEED . . . THRILLS

ALL CLASSES — CHAMPIONSHIP DRIVERS — POWDER PUFF RACES — TRACK LOCATED IN CITY PARK

The PEOPLES STATE BANK

RICHMOND, KANSAS



4% Interest Paid on Savings and Time Deposits

Capital Accounts Over \$150,000.00

Road Testing Exposed!

(Continued from page 10)

"The oil filter is partially concealed beneath the starter motor."

And the starter motor is partially concealed beneath the aust manifold, and the exhaust manifold is partially concealed beneath the brake fluid reservoir and the radiator head-ank. Not long ago I heard a peculiar clanking noise from somewhere in the engine compartment. At first I feared that might be a loose timing chain — until I remembered that it is only the mechanic who had gone into the engine compartment several days earlier and was still there, attempting to move the oil filter.

"Although the Fitchew is not a commonly-seen car, there is good supply of parts wherever the car is sold."

This has one drawback in that the car is not as yet sold in United States. Being forewarned of this disadvantage, I chased a large quantity of parts from the Fitchew dealer where I left Europe. These parts were to be shipped to me as far as possible. Consequently, the car now resides in a two-garage which is 50% Fitchew and 50% Fitchew factory house.

Finally, satisfied that it is possible to maintain a Fitchew in spite of its rarity, the road tester stands back and drinks sheer esthetic beauty of his new-found inamorata:

"The car has a graceful grille."

Not any more. A petulant Ephemerid owner kicked it one day, and the grille now looks like the dental hardware of a smiling alligator with two front teeth missing.

"The bumpers have a beautifully-sculptured smoothness, although they do not appear to be overly strong."

A situation which has caused me some embarrassment — such as on the day I drove the car to a sports car club meeting with the intention of showing it off to the members. One member, an old friend of mine, casually put his foot on the rear bumper, which fell off immediately. The result was not only that the bumper fell off, but also that my friend lost his balance and fell forward onto the rear of the car, and dented the deck with his chin.

Why, people often say, do I put up with the Fitchew at all? "Because," I answer, quoting the road tester's last love-struck words, "there may be faster cars and there may be more comfortable ones, but there are very few that compare to the Fitchew in the field of voluptuous motoring delight."

— By Georgie Tanner

(Reprinted By Permission From Road and Track)

The Start Of A Race

Two different kinds of starts are used in American sports racing; the "grid start" and the "Le Mans start."

For showmanship and excitement nothing can beat the Le Mans start. It takes its name from what's probably the world's latest sports car race, the twenty-four-hour event at Le Mans, France.

In the Le Mans Start the cars are parked, engines shut off,

The common American start is the "grid start." Here the cars are spotted on the track on a painted grid — as at the Lake Garnett Grand Prix — two or three abreast in alternating rows. Their engines are running. At the start, the drivers simply let out their clutches and they're off.

In the grid start, the fastest cars are in the front rows. They are picked by their performance in prerace practice time-trials, or by engine displacement. At the Garnett Nationals this year, the starting positions will be determined by

DRIVERS, CREWS & FANS

Will Be Seeing You
at the
RACES!



7-Up Bottling Co.
Bottlers of
7-Up and Dodger Flavors

Fort Scott, Kansas

WELCOME SCCA

*All Ready-to-Eat
Picnic Foods,
Cold Drinks,
Ice,
Picnic Supplies*

HI-WAY 59



Acknowledgements

Gasoline for race cars by courtesy of Consumers Cooperative Association, Kansas City, Mo., and the Greeley Cooperative Association, Greeley, Kansas.

Fire-fighting equipment by courtesy of Ansul Chemical Company of Kansas City.

Diving equipment by courtesy of Lee D. Hughes, Jayhawk Marine Rescue and Recovery Service, Ottawa, Kansas.

Two-way radio communications by courtesy of Bill Graham.

Wurlitzer electric organ by courtesy of the Butler Music Company, Ottawa, Kansas.

Sound System by Seals Radio & Sound Service, Dodge City, Kansas.

Hay bales by courtesy of Knights of Columbus.

Construction and iron work, I. O. Kite & Son Machine Works and Welding.

Race and road signs by courtesy of McMillan Sign Works, Garnett, Kansas.

Ticket sales and collection by the Garnett Lions Club.

Parking and program sales by the Garnett Rotary Club.

Pre-race communications: Mrs. Frank Bennett; Mrs. Kenneth Crippin.

Program Books, courtesy of the advertisers whose support made this book possible and the Bennett's Publicity & Advertising Service.

Course preparation, State, County and City Employees.

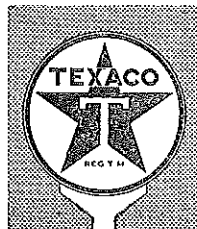
Housing Arrangements, Vista Study Club, Mrs. Robert Powers, Chairwoman.

*Welcome To Garnett
Race Fans*

**STAR GRAIN
& LUMBER CO.**

North on Hi-way 59—Phone 448-2221

Welcome Visitors



**TOWNE'S
TEXACO
SERVICE**

Gasoline
Tires
Accessories

Fourth & Hi-way 59

WELCOME



Nelson Huffman & Loren Page

Welcome to Garnett

United Telephone
Company
of
Kansas



**G R A V E S
D R U G S T O R E**

Walgreen Agency

Robert W. Kingsolver, Pharmacist
South Side □

TOP DRIVE-IN

**SANDWICHES
MALTS & SHAKES
COLD DRINKS**

Hi-way 59, North

ACKNOWLEDGMENTS (Continued)

Assistance with Telephones, United Telephone Co.
House Trailers by courtesy of Burris Motor Co.
Trucks and water by courtesy of the Graham School for Cattlemen.
Ambulances and mimeographing by courtesy Farris Funeral Home.
Patrons of Corvette Racing: Allen-Dennis Chevrolet Co., Inc., Olathe, Kansas;
Allen Chevrolet, North Kansas City, Missouri.
Duplicators and electric typewriters for Scorers, courtesy of Tempo Company,
ias City, Missouri.
Invocation, Rev. Ronald D. Burt, Christian Church, Garnett.
Vocalist, Bill Craig, Garnett.
Organist, Mrs. Clarke Jackson, Garnett
Presentation of 1962 Race Queen, Congressman Robert F. Ellsworth, Washington,
C.

Space does not permit the listing of the hundreds of people and business firms of
nett that have helped in organizing, promoting and holding the July 7 and 8 Lake
nett Sports Car Races. Most certainly, an event such as this could not be held
out the full co-operation of the citizens of the entire communiy. Therefore, to each
everyone of you who has had some part in this community undertaking, the Lake
nett Grand Prix Sports Car Racing Association wishes to express grateful appreci-
n for your time, efforts and contributions so generously given

GREETINGS . . .

**SCCA
and
Race Fans**

**ALLEN-DENNIS
CHEVROLET CO.,
Inc.**

E. Loula & New 50 Hi-way
OLATHE, KANSAS
Phone STate 2-0280

**WELCOME
Drivers & Crew**

**McDONALD
AUTO PARTS**

Wagner Brakes
Gates Hose
Monroe Shocks

Visitors Welcome

**TYLER'S
Retail Liquor Store**

SOUTH SIDE SQUARE

Welcome Visitors

**Deep Rock Service
& Appliance, Inc.**

B. F. Goodrich
Tires, Batteries and Accessories
RCA Appliances and TV
Motorola TV



(Photo by Bob Beasley, Consumers Co-op, Kansas City)

The start of a race — drivers headed for the Flatiron Corner at speeds approaching 100 mph.

Point Standings 1962 National Championship

As of May 1, 1962

(First, second and third high-point winners, only.)

A Production			D Production			G Production		
1 R. K. Thompson, Jr.	Washington	18	1 Herb Everett	New England	16	1 Jack Crusoe	New England	20
2 Ben Moore	Philadelphia	16	2 Donald Erlbeck	Washington	10	2 Peter Van der Vate	Washington	16
2 Douglas Thiem	Milwaukee	16	2 Eric Mangelson	Detroit	10	3 Dick Haselton	New England	14
4 Bob Grossman	New York	10	2 Robert Richardson	Cent. Florida	10			
			5 Nagle Bridwell	Philadelphia	8			
B Production			E Modified			H Modified		
1 Don Yenko	Steel Cities	20	1 Bob Holbert	Philadelphia	20	1 John Gordon	South Jersey	18
2 Bruce Jennings	Washington	16	2 Chuck Cassell	Cent. Florida	8	2 Glenn Baldwin	Detroit	10
2 Ralph Salyer	Fort Wayne	16				2 George Peck	Cent. Florida	10
4 Grady Davis	Steel Cities	10				4 Ben Diaz	South Jersey	8
						4 Tommy Van Hoozier	East Tennessee	8
C Modified			E Production			H Production		
1 Charles Kolb	Florida	10	1 Bob Tullius	Washington	26	1 Ed Astri	Washington	18
2 Harry Heuer	Chicago	8	2 Jay Signore	No. New Jersey	24	1 E. Hessert	South Jersey	18
2 Ed Smith	Steel Cities	8	3 William Gurnee	Philadelphia	8	3 H. I. Kleinpater	Florida	10
4 Art Huttinger	Cent. Florida	6				4 Randy Canfield	Washington	8
4 Ed Lowther	Steel Cities	6	F Modified			4 Robert Roe	Cent. Florida	8
4 John Todd	No. New Jersey	6	1 Bob Bucher	So. New York	20			
			2 Joe Buzzetta	New York	16			
			3 Jacques DuPont	Philadelphia	6			
C Production			F Production			Formula Junior		
1 J. Ross McCain	Atlanta	16	1 Howard Hanna	Philadelphia	24	1 Floyd Aaskov	New England	20
2 Don Greimel	Washington	12	2 Don Sessler	Ohio Valley	12	2 Chuck Dietrich	N. W. Ohio	10
3 Duncan Black	Washington	10	3 Skip Barber	Philadelphia	10	2 Walt Hansgen	No. New Jersey	10
3 D. Clark	New York	10				2 Tim Mayer	N. E. Penn.	10
3 Bob Evelyn	New England	10	G Modified			5 Mark Donohue	No. New Jersey	8
3 Horace Pettit	Philadelphia	10	1 Ben Warren	North Carolina	14	5 Roger Penske	Philadelphia	8
			2 Curt Gonstead	Milwaukee	10			
			2 Arthur Tweedale	Washington	18			
D Modified			2 M. R. J. Wyllie	Steel Cities	16	Formula III		
1 Roger Penske	Philadelphia	20	5 Joe Hutchinson	Atlanta	8	1 John Field	New England	20
2 Alan Connell	Texas	10	5 Tom Terrell	Chicago	8	2 Don Auray	New England	8
3 Walt Hansgen	No. New Jersey	8				2 Rowland Oliver	Washington	8
						4 Tom Robinson	Washington	6
						4 James Stevens	New England	6

WHAT TO DO IN GARNETT

Friday and Saturday Nights

Come To The New V. F. W. Building Overlooking The South Lake
Open House Friday Night — Dutch Lunch And Refreshments

STAGS OR COUPLES WELCOME!

GARNETT COMMITTEE MEMBERS

Claude Anderson	Ray Harden	Glen Osborn
Frank Bennett	Arthur Hughes	Carroll Schulte
Sam Busby	Robert Kite	Gwinn G. Shell
Meryl Coker	Kenneth Lyle	Don J. Stith
Jimmy Cooper	Don McAfee	W. R. Stockebrand
Kenneth Crippin	Leonard McCalla, Jr.	Richard Sweers
Dick Dalton	Joe McKerracher	Loren Warner
Eugene Durst	Owen T. McMillan	Dr. R. E. White
Richard Farris	Frank Miller	
Bill Graham	Paul M. Nesbitt	

Ordinance No. 1879 of the City of Garnett

The construction and erection of temporary structures, scaffolds, platforms or perches, either stationary or moveable, on or off a vehicle, on public grounds of the City of Garnett, Kansas, is prohibited except by permission of the proper authorities. Violations of this ordinance shall be deemed guilty of misdemeanor.

CITY AND COUNTY OFFICIALS

Garnett City Officials:	Anderson County Commissioners:
Gwinn Shell, Mayor	H. L. Kelley, Chairman
Robert Garrett, Commissioner	Fred Hicks, Jr.
Clinton Wilson, Commissioner	Raymond Gwin
Sam Geer, Chief of Police	Law Enforcement:
	Kansas State Highway Patrol
	Don Hermreck, Sheriff

WELCOME

**Hunt's
Furniture
Store**

KEN CRIPPIN — Says "Hello"

BENNETT'S
*Publicity and Advertising
Service*

Phone 448-5546 — P.O. Box 367

GARNETT, KANSAS

*The Garnett
Publishing Company*

Publishers of
**THE ANDERSON COUNTIAN
THE GARNETT REVIEW**

Commercial Printing

SEE THE FABULOUS
A V A N T I

At The Lake Garnett Grand Prix
(Fourth Public Showing)



FRONTIER MOTORS

2735 MAIN

KANSAS CITY, MO.

Large Selection of Pre-owned Mercedes-Benz

ANDERSON MOTOR COMPANY

GARNETT, KANSAS

LARKS

GRAN TURISMO HAWKS

This space is reserved for notes and autographs by
The Garnett Savings & Loan Association



Welcome!



Visitors & Sports Car Club of America



to the Fourth Annual



GARNETT STATE SAVINGS BANK

And Also

CITIZENS STATE BANK, Pomona, Kansas
FARMERS STATE BANK, Walnut, Kansas
HEPLER STATE BANK, Hepler, Kansas
BEVERLY STATE BANK, Beverly, Kansas
BANK OF ODESSA, Odessa, Mo.
PLEASANT HILL BANK, Pleasant Hill, Mo.
CITIZENS BANK OF ATCHISON COUNTY, Rock Port, Mo.
CITIZENS BANK OF NORBORNE, Norborne, Mo.
THE LATHROP BANK, Lathrop, Mo.
THE LA MONTE COMMUNITY BANK, La Monte, Mo.
SUBURBAN BANK, Kansas City, Mo.
BUSH CITY STATE BANK, Bush City, Kansas
CENTERVILLE STATE BANK, Centerville, Kansas

GOPPERT BANKS

Serving the Midwest



*Up to 4% Interest Paid on Savings
With Safety and Availability Insured
By Federal Deposit Insurance Corporation*